

**GB-1** KAWAI  
SESSION TRAINER

**OWNER'S MANUAL**

**GB-1 KAWAI**  
SESSION TRAINER

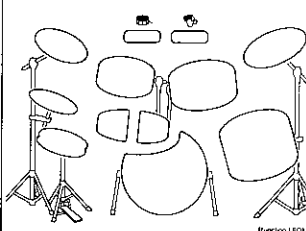
<input type="radio"/> ST. ROCK	ARMAGEDDON	CLUBS	WALTZ
<input type="radio"/> LINDY BELLA	TRAVIS '67	EMULEY	STANDARD
<input type="radio"/> FUNKY B	WINDFIRE	TARTU	BUSGARMENT 1
<input type="radio"/> SHIP IT	Z SHUFFLE	CHICK BOX	BUSGARMENT 2
<input type="radio"/> ROCK N' ROLL	DEED DEED	GENTLE BWO	SAMBA 1
<input type="radio"/> STAND UP	ROCK 'EM	BE BALLAD	SAMBA 2
<input type="radio"/> RADIO ROCK	HOT SPICE	DOWNTOWN	HESAY
<input type="radio"/> TRAD. ROLL	WINDSTOP	BE STREET	FRANK
<input type="radio"/> C.C.'60	BEAT POP	MCS YOU	B.Y. JAZZ
<input type="radio"/> MONEY	FRANK STAR	JMS. EIGHT	FUSION
<input type="radio"/> MR. J	METAL	L.A. BOB	BLONDE
<input type="radio"/> PRETTY	HARD	SOTT LENA	ROLLING

POP/ROCK  
 BALLAD  
 JAZZ  
 VARIATION

8 & B  
 DANCE  
 REC'D AD  
 REC'DER 1  
 REC'DER 2

START  
 STOP

FALL IN  
 INTRO  
 ENDING



Assignment				Function LED			
●	●	●	●	●	●	●	●
●	●	●	●	●	●	●	●
●	●	●	●	●	●	●	●
●	●	●	●	●	●	●	●
●	●	●	●	●	●	●	●
●	●	●	●	●	●	●	●
●	●	●	●	●	●	●	●
●	●	●	●	●	●	●	●
●	●	●	●	●	●	●	●
●	●	●	●	●	●	●	●
●	●	●	●	●	●	●	●
●	●	●	●	●	●	●	●
●	●	●	●	●	●	●	●
●	●	●	●	●	●	●	●
●	●	●	●	●	●	●	●
●	●	●	●	●	●	●	●
●	●	●	●	●	●	●	●
●	●	●	●	●	●	●	●
●	●	●	●	●	●	●	●
●	●	●	●	●	●	●	●
●	●	●	●	●	●	●	●
●	●	●	●	●	●	●	●
●	●	●	●	●	●	●	●
●	●	●	●	●	●	●	●
●	●	●	●	●	●	●	●
●	●	●	●	●	●	●	●

INPUT VOL. INPUT VOL. P. SW. INPUT LINE OUT PHONES DC IN 5-12V POWER

## **WARNING**

This equipment generates, uses, and can radiate radio frequency energy. If not installed and used in accordance with the instruction manual, it can cause interference to radio communications. The rules with which it must comply afford reasonable protection against interference when used in most locations. However, there can be no guarantee that such interference will not occur in a particular installation. If this equipment should be suspected of causing interference with other electronic devices, verification can be made by turning its power off and on. If this equipment does appear to be the source of the interference, you should try to correct the interference by one or more of the following measures:

- reorient the receiving antenna.
- move the receiver away from the instrument.
- plug the instrument into a different outlet so that it and receiver are on different branch circuits.
- consult the dealer or a qualified service personnel.

■ This instrument complies with the limits for class B digital apparatus, pursuant to the Radio Interference Regulations, C.R.C., c. 1374.

## ***Thank you for purchasing KAWAI Session Trainer GB-1!***

---

This owner's manual contains valuable information that will help you make full use of this instrument's many capabilities. Read it carefully and keep it handy for future reference.

## **FEATURES**

---

1. A new type of digital musical instrument which allows you to play modern Drum/Bass/Chord patterns with ease of operation. Great as an accompaniment machine for practice or live applications.
2. 1,152 variations are available from 48 basic patterns with transpose, changing major/minor, and other various functions.
3. Realistic PCM tone generator accompaniment sounds.
4. Using 12 Drum/Percussion pads you can play to create original rhythm phrases.
5. Song-recording function for making creative original songs using combinations of patterns and realtime use of drum pads.
6. The multiple power supply system from both AC adaptor & battery to fit any kind of musical application.

---

---

# CONTENTS

---

---

	Page
<b>1 PANEL CONTROLS</b> .....	2
<b>2 BATTERY OPERATION</b> .....	3
<b>3 CONNECTIONS</b> .....	4
<b>4 DEMONSTRATION SONG</b> .....	5
<b>5 PATTERN PLAYING</b> .....	6
<b>A</b> Selecting A Pattern.....	6
<b>B</b> Changing The Tempo.....	7
<b>C</b> Turning The "BACKING" on/off.....	7
<b>D</b> Start To Play.....	7
<b>E</b> Changing The Combination of Pattern Parts.....	8
<b>6 OTHER FUNCTIONS</b> .....	9
<b>A</b> Changing Major/Minor.....	9
<b>B</b> Transpose.....	10
<b>C</b> Tuning.....	11
<b>D</b> Foot Switch Operation.....	12
<b>E</b> "Mono Chord" Play.....	12
<b>7 RECORDING A SONG</b> .....	13
<b>PATTERN CHORD PROGRESSION CHART</b> .....	14
<b>SPECIFICATIONS</b> .....	26

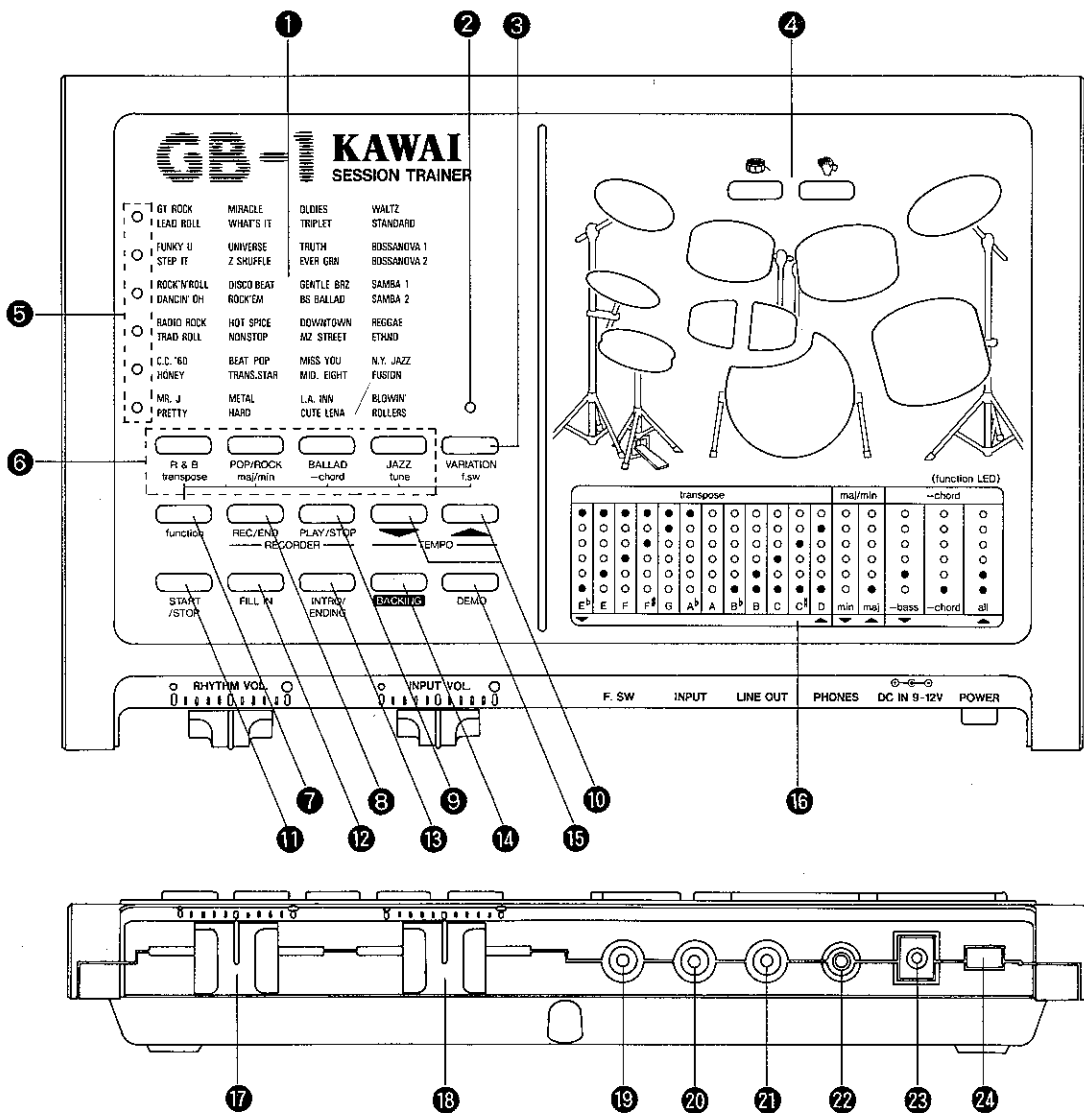
---

## IMPORTANT NOTES

---

- Protect the GB-1 from dust, heat, humidity, and direct sunlight.
- Turn all the power switches off before connecting or disconnecting equipments.
- Clean the GB-1's body with a clean, dry cloth.  
(Do not use benzene, paint thinner, or other solvents.)
- Do not press or move panel switches with too strong force.
- Use AC adaptor PS-121 which is available on your nearest KAWAI dealer.

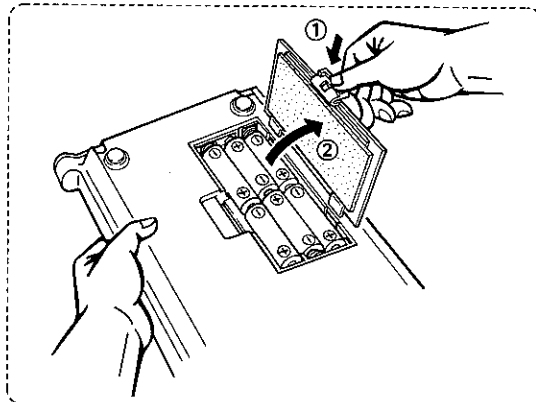
# 1 PANEL CONTROLS



- |                                  |                         |
|----------------------------------|-------------------------|
| 1 Pattern Name Board             | 13 INTRO/ENDING Switch  |
| 2 VARIATION LED                  | 14 BACKING Switch       |
| 3 VARIATION Switch               | 15 DEMO Switch          |
| 4 Drum Pads                      | 16 LED Indication Chart |
| 5 Pattern/Function LED           | 17 Rhythm Volume        |
| 6 Pattern/Function Select Switch | 18 Input Volume         |
| 7 FUNCTION Switch                | 19 Foot Switch Jack     |
| 8 REC/END Switch                 | 20 Input Jack           |
| 9 PLAY/STOP Switch               | 21 Line Out Jack        |
| 10 Tempo (▲/▼) Switch            | 22 Headphone Jack       |
| 11 START/STOP Switch             | 23 DC In Jack           |
| 12 FILL IN Switch                | 24 Power Switch         |

## 2 BATTERY OPERATION

- ① Pinch the stopper of battery cover and:
- ② Carefully remove it.
- ③ Insert six AA batteries according to the direction ( $\oplus/\ominus$ ) indicated on the bottom of the battery case.
- ④ Replace the battery cover.

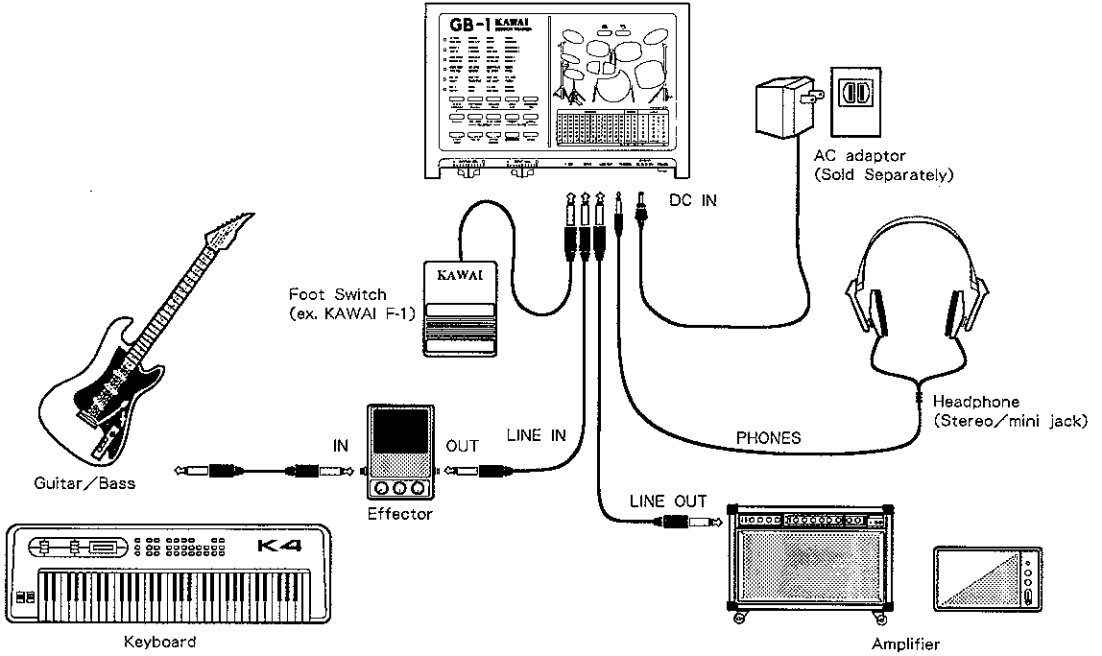


**Note:**

- \* If the volume fades or there are sound quality problem during battery operation, it is time to replace the battery.
- \* Replace the batteries as a set. Never mix batteries of different ages or different types.
- \* Do not leave batteries inside the instrument during storage, long periods of disuse, or AC operation.

# 3 CONNECTIONS

Please refer to the illustration below to connect your own instrument/equipment and GB-1.



\* The slider "RHYTHM VOL" controls GB-1's pattern/pad sound levels. "INPUT VOL" controls your connected instrument. Set your volume balance using them.

## 4 DEMONSTRATION SONG

---

To hear the demonstration song included in GB-1;

- ❶ Set batteries or AC adaptor to GB-1.
- ❷ Connect your instrument/equipment and GB-1.
- ❸ Turn the power of GB-1 and other equipments ON.
- ❹ Press **DEMO** switch so that GB-1 starts to play demonstration.

\* This demo song repeats until you press **DEMO** or **START/STOP** switch.

\* You can transpose the key of this demo song (see P.10) and tune the pitch (P.11). Please note the other functions being explained in this manual are not accessible during the demo song.

\* This demo always starts when you press **DEMO** switch even during playback of GB-1 preset patterns or your recorded song (see P.13).

# 5 PATTERN PLAYING

## A Selecting A Pattern

The GB-1 includes totally 48 preset patterns (24 Normal/24 Variation).

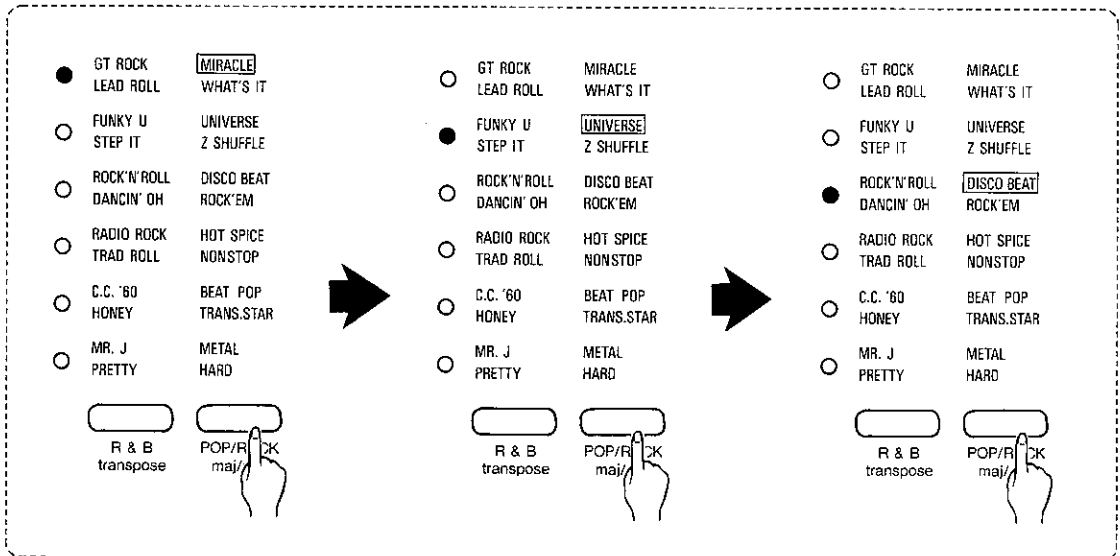
Use four Pattern Select switches (**R&B**, **POP/ROCK**, **BALLAD**, **JAZZ**) and **VARIATION** switch to select a pattern.

**Normal Pattern** ..... Blue-color

**Variation Pattern** ..... Purple-color (available when VARIATION LED lights)

Example: If you want to select "DISCO BEAT" ...

Light the third Pattern/Function LED from the top by pressing Pattern Select switch indicated as **POP/ROCK**.



**Note:**

After the above procedure, you can select "ROCK'EM" with pressing **VARIATION** switch. (LED above the switch starts to light.)

PATTERN PLAYING



## B Changing The Tempo

Pressing **▲** (or **▼**) increases (or decreases) the tempo of playing pattern.

- \* Holding one of these switches changes the tempo successively.
- \* Pressing these two switches simultaneously recalls the original tempo for each pattern.

## C Turning The “BACKING” on/off

Pressing **BACKING** switch changes if the GB-1 plays the pattern with “BACKING” (Bass/Chord) or not (Drums only).

### Note:

- \* This “BACKING” is always off when the GB-1’s power is turned on.
- \* This switch is also effective even after setting “Changing the Combination of Pattern Parts” (P.8).

## D Start To Play

- ① Press **START/STOP** switch .....The pattern starts to play normally.  
Or press **INTRO/ENDING** switch ....The pattern starts with introduction.

- ② While the pattern plays you can change:
  - Tempo (using **▲** or **▼** switch)
  - BACKING on/off (using **BACKING** switch)
  - Pattern (using four Pattern switches and **VARIATION** switch)

- ③ Add the fill in by pressing the **FILL IN** switch.  
You can also add your free drum fill by hitting any of 12 Drum Pads on GB-1’s panel.

- ④ If you want to stop playing...  
Press **START/STOP** switch .....The pattern stops normally.  
Or press **INTRO/ENDING** switch ....The pattern stops with ending.  
(It is most effective to press this switch just when the pattern returns to the beginning.)

## **E** Changing The Combination of Pattern Parts

All of GB-1's 48 patterns are made of three parts, "Drum", "Bass" and "Chord".

The combination of Drum/Bass/Chord is changeable with the procedure below:

① Hold down **function** switch and press **-chord** switch.

(The LED above **VARIATION** switch starts to flash.)

② Use **▲** or **▼** switch to change the type of pattern:

- Drums + Bass (without Chord)
- Drums + Chord (without Bass)
- Drums + Bass + Chord (all)

The Function LEDs indicate the type selected as the right chart shows.

③ Press **function** switch again to end the procedure.

④ Play your desired pattern.

(See "**D** Start to Play".)

(w/o Bass)	(w/o chord)	(all)
○	○	○
○	○	○
○	○	○
○	○	○
●	○	●
○	●	●
- bass	- chord	all

**Note:**

*All parts (Drum/Bass/Chord) are turned on when the GB-1's power is applied.*

## 6 OTHER FUNCTIONS

### A Changing Major/Minor

Each of 48 preset patterns has two different chord progressions, one is in a major key and the other is minor. (See "Pattern Chord Progression Chart" P.14~25)

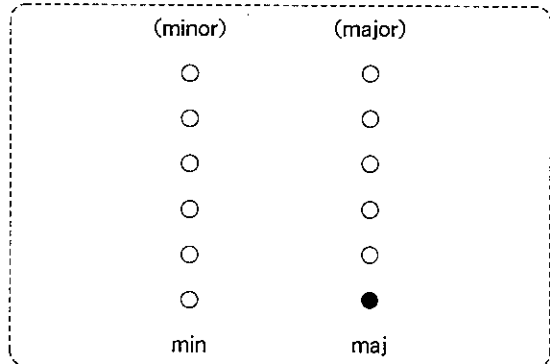
You can change major/minor with the procedure below:

① Hold down **function** switch and press **maj/min** switch.

② Use **▲** or **▼** to select major or minor.  
(Function LEDs indicate that now GB-1 selects major or minor as the right chart shows.)

③ Press **function** switch again to end the procedure.

④ Play your desired pattern.  
(See "**D** Start to Play".)



**Note:**

*Major is always selected when the GB-1's power is applied.*

## 6. OTHER FUNCTIONS

### **B** Transpose

All preset patterns of GB-1 are set to A (or Am) as the standard key.

If you want to change the key (transpose) to match your instrument, please set to any key using the procedure below.

① Hold **function** switch and press **transpose** switch.

② Use **▲** or **▼** to select one from 12 musical keys.  
(LEDs indicate what key is now selected as the chart below.)

●	●	●	●	●	●	○	○	○	○	○	○
○	○	○	○	●	○	○	○	○	○	○	●
○	○	○	●	○	○	○	○	○	○	●	○
○	○	●	○	○	○	○	○	○	●	○	○
○	●	○	○	○	○	○	○	●	○	○	○
●	○	○	○	○	○	○	●	●	●	●	●
D <sup>#</sup> (E <sup>b</sup> )	E	F <sup>#</sup>	F	G	G <sup>#</sup> (A <sup>b</sup> )	A	A <sup>#</sup> (B <sup>b</sup> )	B	C	C <sup>#</sup>	D

\* D # = E b、G # = A b、A # = B b

③ Press **function** switch again to end this procedure.

④ Play your desired pattern.  
(See "**D** Start to Play".)

**Note:**

*The key A is always selected when the GB-1's power is first applied.*

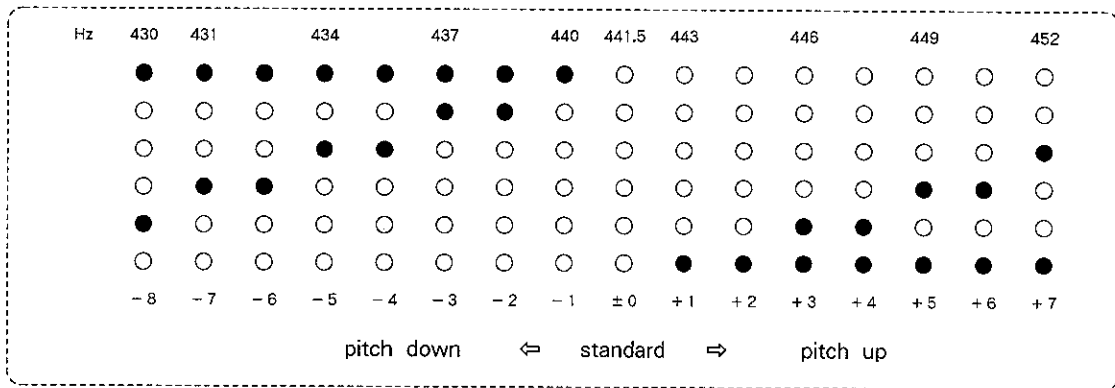
# C Tuning

Use this function to tune your guitar/bass/keyboard and GB-1.

- ❶ Hold down **function** switch and press **tune** switch.  
 The sound of standard pitch (Default = 441.5Hz) is generated.

To change the standard pitch, the following procedure is used.

- ❷ Use **▲** or **▼** to change the pitch.  
 (LEDs change according to changing of the pitch as below.)



- ❸ Press **function** switch again to end this procedure.

**Note:**  
*The default pitch (441.5Hz) is always set when the GB-1's power is first applied.*

## D Foot Switch Operation

You can assign any of GB-1's panel switches (except **function** switch) and 12 drum pads to the connected foot switch (such as Kawai F-1).

- 1 Hold down **function** switch and press **f.sw** (= VARIATION) switch.
- 2 Press the desired switch (or pad).

**Example (1):** If you want to add fill in with foot switch ...

→ Press **FILL IN** switch.

**Example (2):** If you want to play the bass drum sound with foot switch ...

→ Press Bass Drum pad.

- 3 Press **function** switch again to end this procedure.

**Note:**

*The START/STOP function is always assigned to foot pedal when the GB-1's power is first applied.*

## E "Mono Chord" Play

- 1 Hold down **function** switch and press **START/STOP** switch.
- 2 The selected pattern starts to play repeating the first one chord.  
(Useful for training of one-chord ad-lib.)

# 7 RECORDING A SONG

Using the recording function of the GB-1, you can create your own progression of patterns (including INTRO/ENDING and FILL IN) with additional drum phrases.

① Press **REC/END** switch.

The click of rim shot sound starts to count.

② To start the recording ...

A. Hit the drum pad.

B. Start the pattern (with **START/STOP** or **INTRO/ENDING** switch).

The click of closed hi-hat starts instead of rim shot.

③ You can record the contents below:

- Selection of patterns (Both Normal/Variation available)
- Intro/Ending
- Fill in
- Realtime play of drum pads

(Please note that the changing of tempo during recording cannot be recorded.)

④ Press **REC/END** switch again to stop the recording.

⑤ Press **PLAY/STOP** switch to start playback.

(Pressing again stops the song)

⑥ To erase the recorded song, press both **REC/END** and **PLAY/STOP** switches simultaneously.

(This procedure is necessary before recording a next song. The GB-1 can store one song in its internal memory.)

## Note:

\* After recording, you can change the recorded song with the functions below:

- major/minor
- key (by transpose)
- pitch (by tune)
- BACKING on/off
- Tempo (by ▲/▼)

Please note that you cannot add a new fill-in or ending by **FILL IN** and **INTRO/ENDING** switches to a recorded song.

\* Song memory is maintained even when power is off by the batteries or AC adaptor. However if the batteries run down and the AC adaptor is not connected, the song memory will be erased.

# PATTERN CHORD PROGRESSION CHART

## ● GT ROCK

MAJOR

4 bars	A	%	D	A :
--------	---	---	---	-----

minor

8 bars	Am <sub>7</sub> B <sup>b</sup> <sub>7</sub>	B <sup>b</sup> <sub>7</sub>	Am	%	F <sub>7</sub> E <sub>7</sub> E <sub>7</sub>	Am <sub>7</sub>	Am <sub>7</sub> Em <sub>7</sub> :
--------	---	-----------------------------	----	---	--	-----------------	-----------------------------------

## ● LEAD ROLL

MAJOR

4 bars	A	D	G	G	C	A	D	G	A :
--------	---	---	---	---	---	---	---	---	-----

minor

8 bars	Am	%	Em <sub>7</sub>	%	F <sub>7</sub>	Em <sub>7</sub>	Am	Em :
--------	----	---	-----------------	---	----------------	-----------------	----	------

## ● FUNKY U

MAJOR

4 bars	A <sub>7</sub> SUS <sub>4</sub> A <sub>7</sub>	A <sub>7</sub>	D <sub>7</sub> SUS <sub>4</sub> D <sub>7</sub>	D <sub>7</sub> :
--------	--	----------------	--	------------------

minor

4 bars	Am <sub>7</sub>	%	D <sub>7</sub> SUS <sub>4</sub> D <sub>7</sub>	D <sub>7</sub> :
--------	-----------------	---	--	------------------

## ● STEP IT

MAJOR

4 bars	A	%	D <sub>7</sub>	% :
--------	---	---	----------------	-----

minor

4 bars	Am	%	F <sub>7</sub>	G <sub>7</sub> :
--------	----	---	----------------	------------------

## ● ROCK'N'ROLL

MAJOR

12 bars	A	%	%	%	D <sub>7</sub>	%	A	%	E <sub>7</sub>	D <sub>7</sub>	A	E :
---------	---	---	---	---	----------------	---	---	---	----------------	----------------	---	-----

minor

8 bars	Am <sub>7</sub> B <sup>b</sup> <sub>7</sub>	B <sup>b</sup> <sub>7</sub>	Am	%	F <sub>7</sub> E <sub>7</sub> E <sub>7</sub>	Am <sub>7</sub>	Am <sub>7</sub> Em <sub>7</sub> :
--------	---	-----------------------------	----	---	--	-----------------	-----------------------------------



● DANCIN'OH

MAJOR

12 bars	A <sub>7</sub>	%	%	%	D <sub>7</sub>	%	A <sub>7</sub>	%	E <sub>7</sub>	D <sub>7</sub>	A <sub>7</sub>	E <sub>7</sub> :
---------	----------------	---	---	---	----------------	---	----------------	---	----------------	----------------	----------------	------------------

minor

8 bars	Am	%	%	%	F <sub>7</sub>	E <sub>7</sub>	Am	B <sup>b</sup> <sub>7</sub> :
--------	----	---	---	---	----------------	----------------	----	-------------------------------

● RADIO ROCK

MAJOR

12 bars	A	%	%	%	D <sub>7</sub>	%	A	%	E <sub>7</sub>	D <sub>7</sub>	A	E :
---------	---	---	---	---	----------------	---	---	---	----------------	----------------	---	-----

minor

8 bars	Am <sub>7</sub>	B <sup>b</sup> <sub>7</sub>	B <sup>b</sup> <sub>7</sub>	Am	%	F <sub>7</sub>	E <sub>7</sub>	E <sub>7</sub>	Am <sub>7</sub>	Am <sub>7</sub> Em :
--------	-----------------	-----------------------------	-----------------------------	----	---	----------------	----------------	----------------	-----------------	----------------------

● TRAD ROLL

MAJOR

2 bars	A	D	E <sub>7</sub>	E <sub>7</sub> :
--------	---	---	----------------	------------------

minor

2 bars	Am	F	G	G :
--------	----	---	---	-----

● C.C.'60

MAJOR

12 bars	A <sub>7</sub>	D <sub>7</sub>	A <sub>7</sub>	%	D <sub>7</sub>	%	A <sub>7</sub>	%	E <sub>7</sub> E <sup>b</sup> <sub>7</sub>	D <sub>7</sub>	A <sub>7</sub> D <sub>7</sub>	A <sub>7</sub> E <sub>7</sub> :
---------	----------------	----------------	----------------	---	----------------	---	----------------	---	--	----------------	-------------------------------	---------------------------------

minor

18 bars	Am	%	Dm <sub>7</sub> SUS4	Dm <sub>7</sub>	Am	%	F <sub>7</sub>	E <sub>7</sub>	Am	%
	C <sup>(13)</sup>	%	F	%	Dm <sub>7</sub> <sup>S</sup>	E <sub>7</sub> <sup>(-13)</sup> E <sub>7</sub>	Am Dm <sub>7</sub>	Am E <sub>7</sub> :		

PATTERN CHORD PROGRESSION CHART

● HONEY

MAJOR

4 bars	A	D	F <sup>#</sup> m <sub>7</sub>	G	A	D	G	:
--------	---	---	-------------------------------	---	---	---	---	---

minor

2 bars	Am	G	F <sup>#</sup> m <sub>7</sub> <sup>5</sup>	F	:
--------	----	---	--	---	---

● MR.J

MAJOR

12 bars	A <sub>7</sub>	D <sub>7</sub>	A <sub>7</sub>	%	D <sub>7</sub>	%	A <sub>7</sub>	F <sup>#</sup>
	Bm <sub>7</sub>	E <sub>7</sub>	A <sub>7</sub> F <sup>#</sup>	Bm <sub>7</sub> E <sub>7</sub>	:			

minor

12 bars	Am	Dm	Am	%	Dm	%	Am	%
	F <sub>7</sub>	E <sub>7</sub>	Am Dm	Am E <sub>7</sub>	:			

● PRETTY

MAJOR

4 bars	A	A <sup>#</sup> <sub>dim</sub>	Bm <sub>7</sub>	Bm <sub>7</sub> <sup>5</sup>	A	Cm <sup>#</sup> <sub>7</sub> C <sub>7</sub> Bm <sub>7</sub> E <sub>7</sub>	:
--------	---	-------------------------------	-----------------	------------------------------	---	--	---

minor

8 bars	Am <sub>7</sub>	B <sup>b</sup> <sub>7</sub>	Am <sub>7</sub>	%	F <sub>7</sub>	E <sub>7</sub>	E <sub>7</sub>	E <sub>7</sub> <sup>-13</sup>	Am	F <sub>7</sub>	E <sub>7</sub> E <sub>7</sub> <sup>-13</sup>	:
--------	-----------------	-----------------------------	-----------------	---	----------------	----------------	----------------	-------------------------------	----	----------------	--	---

● MIRACLE

MAJOR

8 bars	D <sub>Δ7</sub>	Bm <sub>7</sub>	C <sup>#</sup> m <sub>7</sub>	F <sup>#</sup> <sub>SUS4</sub> F <sup>#</sup> <sub>7</sub>	Bm <sub>7</sub>	E <sub>7SUS4</sub> E <sub>7</sub>	A <sub>Δ7</sub>	A <sub>7SUS4</sub> A <sub>7</sub>	:
--------	-----------------	-----------------	-------------------------------	--	-----------------	-----------------------------------	-----------------	-----------------------------------	---

minor

8 bars	Am <sub>7</sub>	%	Dm <sub>7</sub> <sup>9</sup>	%	Bm <sub>7</sub> <sup>5</sup>	E <sub>7</sub> <sup>-9</sup>	Am <sub>7</sub>	Dm Em	:
--------	-----------------	---	------------------------------	---	------------------------------	------------------------------	-----------------	-------	---

● WHAT'S IT

MAJOR

1 bar	A <sub>7</sub> :
-------	------------------

minor

8 bars	Am <sub>7</sub>	%	%	%	B <sup>b</sup> <sub>7</sub>	%	%	% :
--------	-----------------	---	---	---	-----------------------------	---	---	-----

● UNIVERSE

MAJOR

12 bars	A <sub>7sus4</sub>	A <sub>7</sub>	A <sub>7sus4</sub>	A <sub>7</sub>	D <sub>7</sub>	%	A <sub>7sus4</sub>	A <sub>7</sub>
	C	D <sub>6sus4</sub> D	E <sub>7</sub>	% :				

minor

16 bars	Am <sub>7</sub>	%	Dm <sub>7sus4</sub> Dm <sub>7</sub>	Dm <sub>7</sub>	E <sub>sus4</sub>	E	Am <sub>7</sub>	%
	B <sup>b</sup> <sub>7</sub>	%	Am <sub>7</sub>	%	B <sup>b</sup> <sub>7</sub>	%	Bm <sub>7</sub> <sup>-5</sup>	E <sub>7</sub> :

● Z SHUFFLE

MAJOR

8 bars	A <sub>Δ7</sub>	Am <sub>7</sub> D <sub>7sus4</sub>	G <sub>Δ7</sub>	Gm <sub>7</sub> C <sub>7sus4</sub>
	F <sub>Δ7</sub>	E <sub>7sus4</sub> E <sub>7</sub>	A <sub>Δ7</sub> B <sup>b</sup> <sub>Δ7</sub>	A <sub>Δ7</sub> B <sup>b</sup> <sub>Δ7</sub> :

minor

4 bars	F <sup>#</sup> m <sub>7</sub> /B	Am <sub>7</sub> /D	Cm <sub>7</sub> /F	G <sup>#</sup> m <sub>7</sub> /C <sup>#</sup> Gm <sub>7</sub> /C :
--------	----------------------------------	--------------------	--------------------	--

● DISCO BEAT

MAJOR

12 bars	A <sub>7</sub>	%	%	%	D <sub>7</sub>	%	A <sub>7</sub>	%	E <sub>7</sub>	D <sub>7</sub>	A <sub>7</sub>	E <sub>7</sub> :
---------	----------------	---	---	---	----------------	---	----------------	---	----------------	----------------	----------------	------------------

minor

8 bars	Am	G	Am	G	F	G	Am	G :
--------	----	---	----	---	---	---	----	-----

PATTERN CHORD PROGRESSION CHART

● **ROCK'EM**

MAJOR

4 bars	A	C	D	E <sub>SUS4</sub> E	:
--------	---	---	---	---------------------	---

minor

8 bars	Am	%	C	%	Bm <sub>7</sub> <sup>-5</sup>	%	E <sub>SUS4</sub>	E	:
--------	----	---	---	---	-------------------------------	---	-------------------	---	---

● **HOT SPICE**

MAJOR

4 bars	A	%	C	D	D	G	:
--------	---	---	---	---	---	---	---

minor

1 bar	Am	:
-------	----	---

● **NONSTOP**

MAJOR

8 bars	A	%	D	%	E	%	D	G C	:
--------	---	---	---	---	---	---	---	-----	---

minor

12 bars	Am	%	F <sub>Δ7</sub>	F	Dm <sub>7</sub>	%	E <sub>7</sub>	E <sub>7</sub> <sup>(-13)</sup>	Am	F G	Am	F G	:
---------	----	---	-----------------	---	-----------------	---	----------------	---------------------------------	----	-----	----	-----	---

● **BEAT POP**

MAJOR

4 bars	A	C	D	A	:
--------	---	---	---	---	---

minor

8 bars	Am	Dm <sub>7SUS4</sub> Dm <sub>7</sub>	Am	%	Dm <sub>7</sub>	G <sub>SUS4</sub> G	F	E <sub>7</sub>	:
--------	----	-------------------------------------	----	---	-----------------	---------------------	---	----------------	---

● **TRANS. STAR**

MAJOR

4 bars	A	%	C D	A	:
--------	---	---	-----	---	---

minor

4 bars	Am	%	E	E F	G <sup>b</sup> G	:
--------	----	---	---	-----	------------------	---

● METAL

MAJOR

8 bars	A	%	E	%	F#m	%	D	%	:
--------	---	---	---	---	-----	---	---	---	---

minor

8 bars	Am	C	Bm7 <sup>5</sup>	Dm	Am	F	G	Am	:
--------	----	---	------------------	----	----	---	---	----	---

● HARD

MAJOR

2 bars	A D	E A	:
--------	-----	-----	---

minor

1 bar	Am	:
-------	----	---

● OLDIES

MAJOR

10 bars	A F#m	Bm E <sub>7</sub>	A F#m	Bm E <sub>7</sub>	A F#m	A F#m	D	E <sub>7</sub> <sup>(9)</sup>
	A D	A E <sub>7</sub> <sup>(9)</sup>	:					

minor

4 bars	Am	Dm	G <sub>7</sub> SUS4 G <sub>7</sub>	C <sub>Δ7</sub> E <sub>7</sub>	:
--------	----	----	------------------------------------	--------------------------------	---

● TRIPLET

MAJOR

16 bars	A <sub>Δ7</sub>	%	G#m <sub>7</sub> <sup>5</sup>	C# <sub>7</sub>	F#m <sub>7</sub>	%	Em <sub>7</sub>	A <sub>7</sub>	D <sub>Δ7</sub>	Dm <sub>7</sub>	C#m <sub>7</sub>	F# <sub>7</sub>
	Bm <sub>7</sub>	B <sub>7</sub>	E <sub>7</sub> SUS4	E <sub>7</sub>	:							

minor

8 bars	Am <sub>9</sub>	Dm <sub>7</sub>	G <sub>7</sub>	Em <sub>7</sub> C <sub>Δ7</sub>	F	F# <sub>dim</sub>	G	E <sub>7</sub>	:
--------	-----------------	-----------------	----------------	---------------------------------	---	-------------------	---	----------------	---

PATTERN CHORD PROGRESSION CHART

● TRUTH

MAJOR

16 bars	A	D	E <sub>7</sub>	C <sup>#</sup> m <sub>7</sub>	D	F <sup>#</sup> m <sub>7</sub>	G <sup>#</sup> m <sub>7</sub>	Bm <sub>7</sub>	E <sub>7</sub>	
	A	A/B	B <sub>7</sub>	B <sub>7</sub>	C <sub>dim</sub>	C <sup>#</sup> m <sub>7</sub>	D	G <sup>#</sup>	C <sup>#</sup> <sub>7sus4</sub>	C <sup>#</sup> <sub>7</sub>
	D <sub>Δ7</sub>	E <sub>7</sub>	C <sup>#</sup> <sub>7</sub> /F	F <sup>#</sup> m	E	D <sub>Δ7</sub>	E <sub>7</sub>	A <sub>Δ7</sub>	C <sup>#</sup> <sub>7</sub>	
	D <sub>Δ7</sub>	E <sub>7</sub>	C <sup>#</sup> <sub>7</sub> /F	F <sup>#</sup> m	E	D <sub>Δ7</sub>	E <sub>7</sub>	A		∴

minor

4 bars	Dm <sub>7</sub>	G <sub>7sus4</sub>	G <sub>7</sub>	C <sub>Δ7</sub>	F <sub>Δ7</sub>	Bm <sub>7</sub> <sup>-5</sup>	E <sub>7sus4</sub>	E <sub>7</sub>	Am <sub>7</sub> <sup>9</sup>	C <sup>#</sup> <sub>dim</sub>	∴
--------	-----------------	--------------------	----------------	-----------------	-----------------	-------------------------------	--------------------	----------------	------------------------------	-------------------------------	---

● EVER GRN

MAJOR

4 bars	A	E	F <sup>#</sup> m	D <sub>Δ7</sub>	D <sub>6</sub>	A	E	D	C <sup>#</sup> m	Bm	A	∴
--------	---	---	------------------	-----------------	----------------	---	---	---	------------------	----	---	---

minor

4 bars	Am	G	F <sub>Δ7</sub>		Dm <sub>7</sub>	G <sub>7sus4</sub>	G <sub>7</sub>	C <sub>Δ7</sub>	E <sub>7sus4</sub>	E <sub>-sus</sub>	∴
--------	----	---	-----------------	--	-----------------	--------------------	----------------	-----------------	--------------------	-------------------	---

● GENTLE BRZ

MAJOR

4 bars	C <sup>#</sup> m <sub>7</sub>	F <sup>#</sup> m <sub>7</sub>	Bm <sub>7</sub>	D <sub>Δ7</sub> /E	Am <sub>7</sub> <sup>(9)</sup>	C <sub>Δ7</sub> /D	G <sub>Δ7</sub> <sup>(9)</sup>	Am <sub>7</sub>	Bm <sub>7</sub>	∴
--------	-------------------------------	-------------------------------	-----------------	--------------------	--------------------------------	--------------------	--------------------------------	-----------------	-----------------	---

minor

4 bars	Am <sub>7</sub> <sup>(9)</sup>	Dm <sub>7</sub> <sup>(9)</sup>	F <sub>Δ7</sub> /G	G <sub>7</sub> <sup>(13)</sup>	C <sub>Δ7</sub> <sup>(9)</sup>	F <sub>Δ7</sub> <sup>(+11)</sup>	B <sub>Δ7</sub> <sup>(9)</sup>	Bm <sub>7</sub> <sup>-5</sup>	E <sub>7</sub> <sup>(-9)</sup>	∴
--------	--------------------------------	--------------------------------	--------------------	--------------------------------	--------------------------------	----------------------------------	--------------------------------	-------------------------------	--------------------------------	---

● BS BALLAD

MAJOR

4 bars	A	Bm <sub>7</sub>	C <sup>#</sup> m <sub>7</sub>	D <sub>Δ7</sub>	E <sub>7</sub>	∴
--------	---	-----------------	-------------------------------	-----------------	----------------	---

minor

8 bars	Am	Em	Am	Em	F <sub>Δ7</sub>	C <sub>Δ7</sub>	Am	G	F <sub>Δ7</sub>	∴
--------	----	----	----	----	-----------------	-----------------	----	---	-----------------	---

● DOWNTOWN

MAJOR

16 bars	A <sub>Δ7</sub>	%	G <sup>#</sup> m <sub>7</sub>	C <sup>#</sup> <sub>7</sub>	F <sup>#</sup> m <sub>7</sub>	%	Em <sub>7</sub>	A <sub>7</sub>
	D <sub>Δ7</sub>	Dm <sub>Δ7</sub>	C <sup>#</sup> m <sub>7</sub>	F <sup>#</sup> <sub>7SUS4</sub> F <sup>#</sup> <sub>7</sub>	Bm <sub>7</sub>	B <sub>7</sub>	E <sub>7SUS4</sub>	E <sub>7</sub> ::

minor

16 bars	Dm <sup>9</sup> <sub>7</sub>	%	Am <sup>9</sup> <sub>7</sub>	%	Dm <sup>9</sup> <sub>7</sub>	%	Am <sup>9</sup> <sub>7</sub>	%
	Fm <sup>9</sup> <sub>7</sub>	%	E <sup>b</sup> <sub>Δ7</sub>	Cm <sub>7</sub>	Fm <sup>9</sup> <sub>7</sub>	%	Dm <sup>9</sup> <sub>7</sub>	G <sub>7</sub> ::

● MZ STREET

MAJOR

8 bars	A <sub>Δ7</sub>	F <sup>#</sup> m <sub>7</sub>	Bm <sub>7</sub>	E <sub>7SUS4</sub> E <sub>7</sub>	C <sup>#</sup> m <sub>7</sub>	F <sup>#</sup> m <sub>7</sub>	Bm <sub>7</sub>	E <sub>7SUS4</sub> E <sub>7</sub> ::
--------	-----------------	-------------------------------	-----------------	-----------------------------------	-------------------------------	-------------------------------	-----------------	--------------------------------------

minor

4 bars	Am	F <sub>Δ7</sub>	Dm <sub>7</sub>	E <sub>7SUS4</sub> E <sub>7</sub> ::
--------	----	-----------------	-----------------	--------------------------------------

● MISS YOU

MAJOR

4 bars	A	C D	A E	D ::
--------	---	-----	-----	------

minor

16 bars	Am	%	F	%	G	%	E <sub>7</sub>	%
	Am	%	F	%	G	%	Am	% ::

● MID. EIGHT

MAJOR

4 bars	A	F <sup>#</sup> m	E <sub>SUS4</sub> E	D ::
--------	---	------------------	---------------------	------

minor

4 bars	Am	C <sub>6</sub>	F	E <sup>b</sup> E <sub>7</sub>	F G	Dm	Dm	E <sub>7</sub> ::
--------	----	----------------	---	-------------------------------	-----	----	----	-------------------

PATTERN CHORD PROGRESSION CHART

● L. A. INN

MAJOR

4 bars	D <sub>Δ7</sub> G <sub>7</sub>	C <sup>#</sup> m <sub>7</sub> F <sup>#</sup> <sub>7</sub>	Bm <sub>7</sub> E <sub>7</sub>	A <sub>7SUS4</sub> A <sub>7</sub> :
--------	--------------------------------	---	--------------------------------	-------------------------------------

minor

16 bars	Am	E	G	D	F <sub>Δ7</sub>	C	Dm	E <sub>7</sub>
	F <sub>Δ7</sub>	C	E <sub>7</sub>	Am	F <sub>Δ7</sub>	C	Dm	E <sub>7</sub> :

● CUTE LENA

MAJOR

8 bars	A <sub>Δ7</sub> <sup>(9)</sup>	Dm <sub>7</sub> <sup>9</sup>	F <sub>Δ7</sub> <sup>(9)</sup>	F <sub>Δ7</sub> /G Bm <sub>7</sub> /E	A <sub>Δ7</sub> <sup>(9)</sup>	Dm <sub>7</sub> <sup>9</sup>	F <sub>Δ7</sub> <sup>(9)</sup>	E <sub>7</sub> :
--------	--------------------------------	------------------------------	--------------------------------	---------------------------------------	--------------------------------	------------------------------	--------------------------------	------------------

minor

4 bars	Am <sub>7</sub> <sup>9</sup>	Dm <sub>7</sub>	Bm <sub>7</sub> <sup>-5</sup>	E <sub>7</sub> <sup>-13</sup> :
--------	------------------------------	-----------------	-------------------------------	---------------------------------

● WALTZ

MAJOR

16 bars	A <sub>Δ7</sub> <sup>(9)</sup>	C <sup>#</sup> <sub>7</sub> <sup>(-13)</sup>	D <sub>Δ7</sub> <sup>(+11)</sup>	F <sup>#</sup> <sub>7</sub> <sup>(-13)</sup>	Bm <sub>7</sub> <sup>(9)</sup>	F <sup>#</sup> <sub>7</sub> <sup>(-13)</sup>	Bm <sub>7</sub> <sup>9</sup>	E <sub>7SUS4</sub> E <sub>7</sub>
	C <sup>#</sup> m <sub>7</sub>	C <sub>7</sub>	Bm <sub>7</sub>	E <sub>7</sub>	C <sup>#</sup> m <sub>7</sub>	C <sub>Δ7</sub>	Bm <sub>7</sub> <sup>(11)</sup>	B <sub>Δ7</sub> <sup>(+11)</sup> :

minor

8 bars	Am <sub>7</sub>	A <sub>7</sub>	Dm <sub>7</sub>	D <sup>#</sup> <sub>dim</sub>	Em <sub>7</sub>	A <sub>7</sub> <sup>-13</sup> A <sub>7</sub>	Dm <sub>7</sub> <sup>9</sup>	E <sub>7</sub> <sup>-13</sup> E <sub>7</sub> :
--------	-----------------	----------------	-----------------	-------------------------------	-----------------	--	------------------------------	--

● STANDARD

MAJOR

8 bars	A <sub>Δ7</sub>	F <sup>#</sup> m <sub>7</sub> F <sup>#</sup> <sub>7</sub>	Bm <sub>7</sub>	E <sub>7SUS4</sub> E <sub>7</sub>	C <sup>#</sup> m <sub>7</sub> <sup>-5</sup>	F <sup>#</sup> <sub>7SUS4</sub> F <sup>#</sup> <sub>7</sub>	Bm <sub>7</sub>	B <sub>7</sub> :
--------	-----------------	---	-----------------	-----------------------------------	---	---	-----------------	------------------

minor

8 bars	Dm <sub>7</sub>	G <sub>7SUS4</sub> G <sub>7</sub>	C <sub>Δ7</sub>	F <sub>Δ7</sub>	Bm <sub>7</sub> <sup>-5</sup>	E <sub>7SUS4</sub> E <sub>7</sub>	Am <sub>7</sub>	A <sub>7</sub> <sup>-13</sup> :
--------	-----------------	-----------------------------------	-----------------	-----------------	-------------------------------	-----------------------------------	-----------------	---------------------------------



PATTERN CHORD PROGRESSION CHART

● BOSSANOVA 1

MAJOR

32 bars	A $\Delta_7^{(9)}$	%	B $_7^{(9)}$	%	Bm $_7^{(9)}$	B $_7^{b(+11)(9)}$	A $\Delta_7^{(9)}$	B $_7^{b(+11)(9)}$
	A $\Delta_7^{(9)}$	%	B $_7^{(9)}$	%	Bm $_7^{(9)}$	B $_7^{b(+11)(9)}$	A $\Delta_7^{(9)}$	%
	B $\Delta_7^{(9)}$	%	E $_7^{b(9)}$	%	B $^b m_7^{(9)}$	%	F $_7^{#(9)}$	%
	Bm $_7^{(9)}$	%	G $_7^{(9)}$	%	C $^# m_7$	C $_7^{(-9)}$	Bm $_7$	B $_7^{b(-9)}$ ::

minor

8 bars	Am $_7^9$	A $_{dim}$	Dm $_7^9$	C $_7^{#(9)}$	Cm $_7^9$	B $_7^{(9)}$	B $^b \Delta_7^{(9)}$	Bm $_7^{-5}$ B $_7^{b(9)*}$
--------	-----------	------------	-----------	---------------	-----------	--------------	-----------------------	-----------------------------

● BOSSANOVA 2

MAJOR

16 bars	C $^# m_7$	C $_7^{(9)}$	Bm $_7^{(11)}$	B $_7^{b(+11)(9)}$	C $^# m_7$	C $_7^{(9)}$	Bm $_7^{(11)}$	B $_7^{b(+11)(9)}$
	Em $_7^{(91)}$	E $_7^{b(+11)(9)}$	D $\Delta_7^{(9)}$	G $_7^{(13)}$	C $^# m_7$	C $_7^{(9)}$	Bm $_7^{(11)}$ B $_7^{b(+11)(9)}$	A $_6^9$ ::

minor

8 bars	Am $_7^9$	Em $_7^{-5}$ A $_7^{(-9)}$	Dm $_7^9$	F $\Delta_7/G$ G $_7^{(13)}$	C $\Delta_7$	Gm $_7^9$ C $_7^{(9)}$	F $\Delta_7^{(9)}$	Bm $_7^{-5}$ E $_7^{-13}$ E $_7^*$
--------	-----------	----------------------------	-----------	------------------------------	--------------	------------------------	--------------------	------------------------------------

● SAMBA 1

MAJOR

4 bars	C $^# m_7^{-5}$ F $_7^{#(-9)}$	B $_7^{(9)}$	Bm $_7^9$ E $_7^{(13)}$	A $_6^9$ ::
--------	--------------------------------	--------------	-------------------------	-------------

minor

8 bars	Dm $_7$	G $_7^{7sus4}$ G $_7$	C $\Delta_7$	F $\Delta_7$	Bm $_7^{-5}$	E $_7$	Am $_7$	A $_7$ ::
--------	---------	-----------------------	--------------	--------------	--------------	--------	---------	-----------

● SAMBA 2

MAJOR

8 bars	A	A $\Delta_7$	C $^# m_7^{-5}$ F $_7^*$	B $_7^{(9)}$	Bm $_7^{(9)}$ E $_7^{(9)}$	A $\Delta_7^{(9)}$ F $^# m_7^{(9)}$	Bm $_7^{(9)}$ E $_7^{(13)(9)}$	A E $_7^{(13)}$ ::
--------	---	--------------	--------------------------	--------------	----------------------------	-------------------------------------	--------------------------------	--------------------

minor

2 bars	Am	Bm $_7^{-5}$ E $_7^*$
--------	----	-----------------------

PATTERN CHORD PROGRESSION CHART

● REGGAE

MAJOR

4 bars	A	Bm <sub>7</sub>	E <sub>7</sub>	A E <sub>7</sub> :
--------	---	-----------------	----------------	--------------------

minor

4 bars	Am	Dm <sub>7</sub>	F <sub>7</sub> E <sub>7</sub>	Am E <sub>7</sub> :
--------	----	-----------------	-------------------------------	---------------------

● ETHNO

MAJOR

4 bars	A <sub>6</sub> <sup>9</sup>	%	A <sub>6sus</sub>	% :
--------	-----------------------------	---	-------------------	-----

minor

4 bars	Am <sub>7</sub> <sup>11</sup>	%	Am <sub>7</sub> <sup>9</sup>	% :
--------	-------------------------------	---	------------------------------	-----

● N. Y. JAZZ

MAJOR

2 bars	A <sub>7</sub> <sup>(9)</sup>	Em <sub>7</sub> <sup>(9)</sup>	D <sub>7</sub> <sup>(9)</sup>	G <sub>7</sub> <sup>(9)</sup> :
--------	-------------------------------	--------------------------------	-------------------------------	---------------------------------

minor

12 bars	Am	F <sub>7</sub>	Am	F <sub>7</sub>	Am	Dm Am	Dm F	G E <sub>7</sub>
	Am	Dm Am	Dm G	Em Am :				

● FUSION

MAJOR

16 bars	A <sub>7</sub>	%	B <sub>7</sub> <sup>(9)</sup>	%	Bm <sub>7</sub> <sup>(9)</sup>	%	E <sub>7sus4</sub>	E <sub>7</sub>
	A <sub>7</sub>	%	B <sub>7</sub> <sup>(9)</sup>	%	Bm <sub>7</sub> /E	E <sub>7</sub> <sup>13</sup> E <sub>7</sub> <sup>13</sup>	A <sub>6</sub>	% :

minor

4 bars	Am <sub>7</sub>	D <sub>7</sub>	G <sub>7sus4</sub> G <sub>7</sub>	C <sub>7</sub> :
--------	-----------------	----------------	-----------------------------------	------------------

● **BLOWIN'**

MAJOR

1 bar	A <sub>7</sub>	:
-------	----------------	---

minor

4 bars	Am	%	Dm	Dm E <sub>7</sub>	:
--------	----	---	----	-------------------	---

● **ROLLERS**

MAJOR

4 bars	A <sub>Δ7</sub>	A <sup>#</sup> <sub>dim</sub>	Bm <sub>7</sub>	B <sup>b</sup> <sub>7</sub>	:
--------	-----------------	-------------------------------	-----------------	-----------------------------	---

minor

8 bars	Am <sup>9</sup>	Gm <sup>9</sup>	Bm <sup>11</sup>	E <sub>7</sub> <sup>-13</sup>	Am <sup>9</sup>	B <sup>b</sup> <sub>Δ7</sub> /C C <sub>7</sub> <sup>(9)</sup>	F <sub>Δ7</sub> <sup>(9)</sup>	Bm <sup>11</sup> E <sub>7</sub> <sup>13</sup>	:
--------	-----------------	-----------------	------------------	-------------------------------	-----------------	---	--------------------------------	---	---

# SPECIFICATIONS

<b>SOUND GENERATING SYSTEM</b>	Pulse Code Modulation (PCM)
<b>TONE COLORS</b>	Rhythm: 15 (includes 12 Drum Pad) Bass: 2 Chord: 5
<b>PATTERNS</b>	Rhythm (Drum): 48 Backing (Bass + Chord): 96
<b>RECORDER (INTERNAL MEMORY)</b>	1 Song 600 Events (Pattern Select, Start/Stop, Fill In, Drum Pad Play)
<b>TEMPO</b>	J=48~214
<b>CONTROLLER</b>	Slider : Rhythm Volume, Input Volume Switch : Rhythm/Function Select ( × 4), VARIATION, FUNCTION, REC/END, PLAY/STOP, TEMPO (Up and Down), START/STOP, FILL IN, INTRO/ENDING, BACKING, DEMO Pad : Drum/Percussion ( × 12)
<b>DISPLAY</b>	Pattern/Function LED × 6, Variation LED × 1
<b>JACKS</b>	DC IN, Headphone, Line Out, Input, Foot Switch
<b>DIMENSIONS</b>	271 (W) × 177 (D) × 40.5 (H) mm
<b>WEIGHT</b>	0.5kg (without batteries)

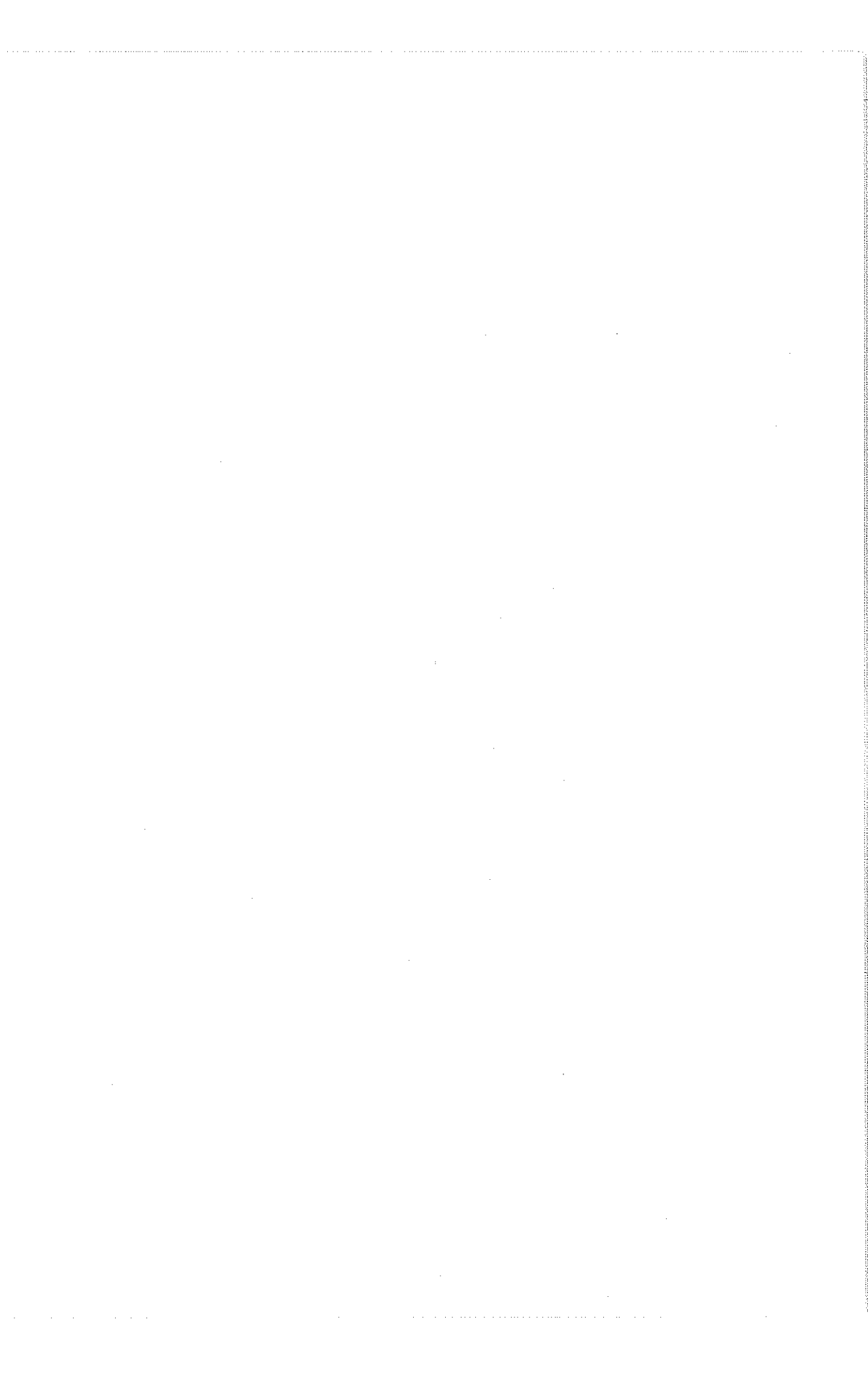
\* Specifications are subject to change without notice.

---

MEMO

---

**MEMO**



**KAWAI**